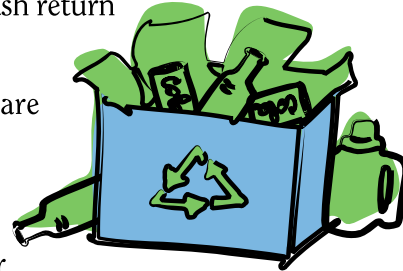


Waste Management continued...

- Inkjet printer cartridges with an intact print head are sent to Empties4Cash for recycling for a cash return. To date, \$3,180 has been received from this program. Laser printer cartridges are returned to the manufacturer for recycling.
- Cell phones are returned to Oldcellphones.com for a cash return or provided to the Transportation office for re-use.
- Excess building materials, computers and televisions are taken to Habitat for Humanity Restore.
- Scrap metal is taken to OmniSource for recycling.
- Monroe County Solid Waste has assisted with the proper disposal of paints and non-earth friendly materials.
- Paper trays have been placed at all shared printers, copiers and fax machines to capture paper that has been printed on one side that can be turned into notepads.
- Surplus furniture is recycled or donated to a local charity for redistribution to the needy.
- A monthly cardboard box giveaway program enables staff to have access to boxes before they are broken down and recycled. They can be returned after they are used for recycling.
- The recycling program has enabled the elimination of two 8-yard dumpsters that had previously been designated for general trash.



Water Conservation

1, 2



- Fresh-water consumption lowered by 35%; overall consumption reduced by 55%.
- Gray water flushing system: gray wastewater is collected via a separate piping system and routed to constructed wetlands for treatment. Once the waste water has been treated, it is returned to the building as recycled gray water. The gray water serves all flushing through water closets and is used for process make up water in the mechanical plant as well as for wash down of external areas. This system reduces water consumption by 6,200 gallons per day.
- Swales installed on parking lots manage storm-water runoff, relieving the city drainage system by keeping water on site.
- Low-flow/water-conserving fixtures and fittings.
- Shower heads have maximum flow of 1.8 gallons per minute.
- Lavatory faucets use aerated outlets rated at 1.5 gallons per minute.

Current Greening Initiatives Campus Departments & Programs



April 2006

1 "IHM Motherhouse Environmentally Sustainable Design,"
Sisters, Servants of the Immaculate Heart of Mary,
Mission for the Millennium.

2 "IHM Landscape Plan Takes Cue From Nature," *IHM Journal*,
Fall 2001.

Report by Campus Greening Committee
April 2006

Sisters, Servants of the
Immaculate Heart Mary



An IHM Campus Greening Committee was organized in December 2003. The committee's charge is:

- To celebrate and raise awareness about the green initiatives completed on campus to date
- To provide oversight to a number of subcommittees that have and will be established to look in-depth at specific areas of campus operations to determine if additional green initiatives are financially feasible and should be recommended
- To increase staff involvement as leaders in tours and as educators regarding our programs

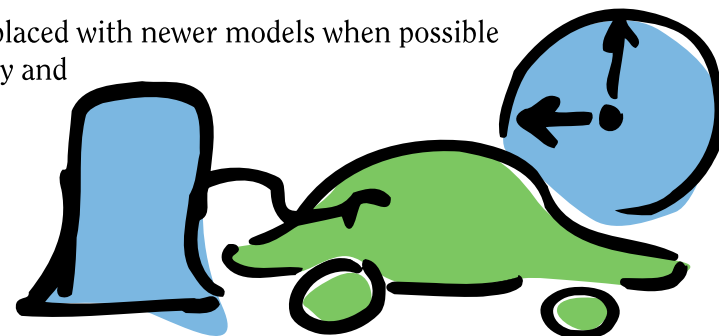
IHM Campus Greening Committee members include Deb Szilagyi; Debby Diehl; Holly Knight; Mary Fran Gilleran, IHM; and Jackie Willis, chair.

An Office Supply Subcommittee, a Medical Supply Subcommittee and a Waste Management Subcommittee are currently reviewing existing practices to determine if green alternatives are available and financially feasible.

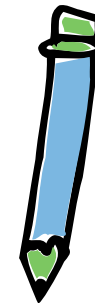
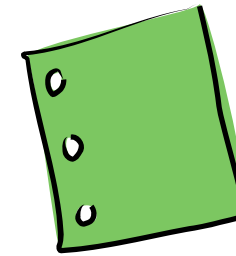
Campus Departments/Programs

Automotive

- Routinely fuel vehicles before 8 a.m. (600 gallons/month).
- Empty oil and anti-freeze drums are returned to supplier.
- All oil is saved and donated to a Lincoln Park machine shop for reuse. Four 55-gallon drums are picked up once a year.
- Oil, anti-freeze and windshield fluid are purchased in bulk to eliminate extra packaging and cost.
- Five hybrid cars are in the fleet and being evaluated.
- The sisters purchase small cars that have lower emissions and better gas efficiency.
- Older fleet vehicles are replaced with newer models when possible for increased fuel efficiency and fewer maintenance needs.



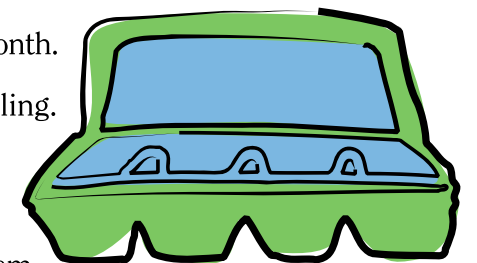
Office Supplies



- Researched and recommended a list of specific sustainable and cost-effective office supply items which were approved as the "standard" for purchase and use by SSIHM departments. Savings = \$1,970/year.
- Initiated a Central Office Supply Program that provides the SSIHM "standard" office supply products available at the smallest possible quantity for internal ordering. "Standard" items include batteries, 20# and 24# white copy paper, 3-hole punched paper, 5 x 7-inch and 8-1/2 x 11-inch white and canary paper pads, sticky notes, pencils, manila file folders and pendaflex files.
- Initiated a "Reuse of Surplus Items Program" to collect and redistribute extra supply items.
- Selected Neenah Environment Forest Stewardship Council's Certified paper with a minimum of 20% Virgin FSC certified fiber and 80% post-consumer fiber for SSIHM letterhead and envelopes.
- Initiated an in-house program to make scratch paper pads from used office paper and used library cards.
- Applied a label to each printer and fax reminding the user to recycle the cartridge.

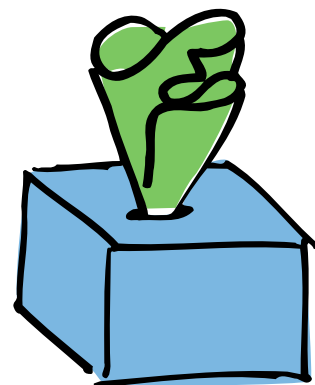
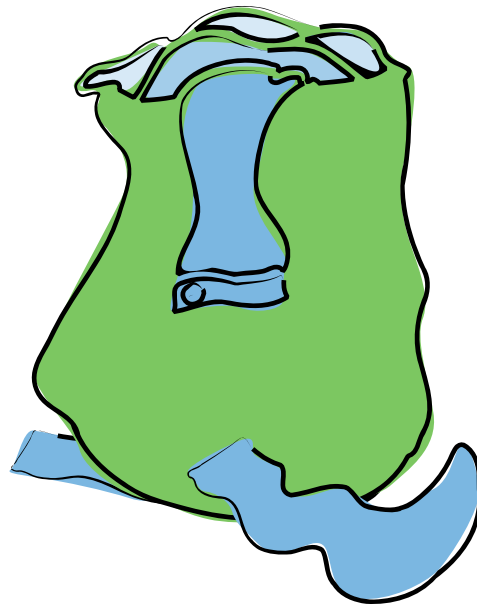
Waste Management

- Recycling collection points are located throughout office and resident areas. Items collected include: paper, cardboard, metal, plastic, glass, Styrofoam peanuts, batteries and prescription vials.
- Office and shredded paper, newspaper, magazines and junk mail are taken to one of the Abitibi containers located on Campus.
- Cardboard, metal and plastic are placed in one of the two 8-yard recycle containers in the loading dock area.
- Glass is taken to Meijers for recycling once a month.
- Styrofoam peanuts are taken to UPS for recycling.
- Batteries are taken to Monroe County Health Department for recycling.
- Egg cartons are given to a sister that takes them to farmers at the Farmer's Market for reuse.



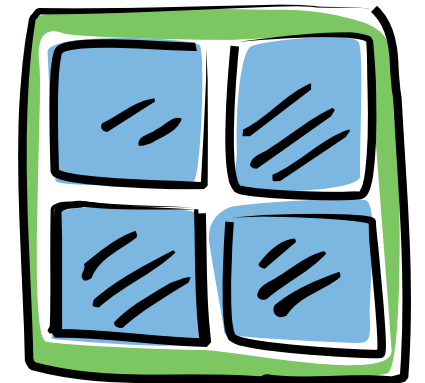
Medical Supplies

- Plastic bags for outgoing laundry have been replaced with laundry bags made from Ecospun material, which is made from 100% recycled plastic bottles and recycled food containers.
- Purchased Silastic catheters which are latex free are maintained for three months instead of six weeks.
- Double-fold towels used by the nursing staff in Skilled Care are made from 100% recycled fiber and post consumer fiber exceeds 40%.
- All disposable gloves used are latex and powder free.
- All mercury thermometers and blood pressure stands containing mercury have been removed.
- Placed recycling boxes on Skilled Care and Memory Care units along with a list of recyclable parts for each Central Supply item.
- Purchased non-CFC containing Styrofoam cups for the Health Care Center.
- Tissue used is 100% recycled in 100% recycled containers and are Green Seal Certified.
- Pharmacy vials and lids are collected for recycling.



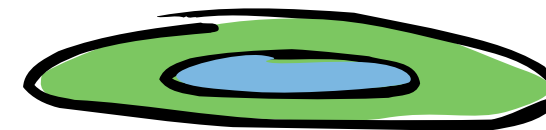
Energy Conservation¹

- A geothermal system for heating and cooling, with a terminal unit in every room, is the basic energy-conserving system.
- Heat recovery system: reclaims heat from exhaust from ductwork, tempers outside cold air and reuses in outside air ducts.
- Anti-scald shower and bath fittings (thermal energy conservation).
- Maximum use of day lighting.
- High-efficiency lighting: high performance lighting, compact fluorescent.
- Occupancy sensors/natural light control/programmed lighting.
- Glass selection and treatment: energy-efficient, insulated glass.
- Lamps for exterior lights are the lowest possible light levels.



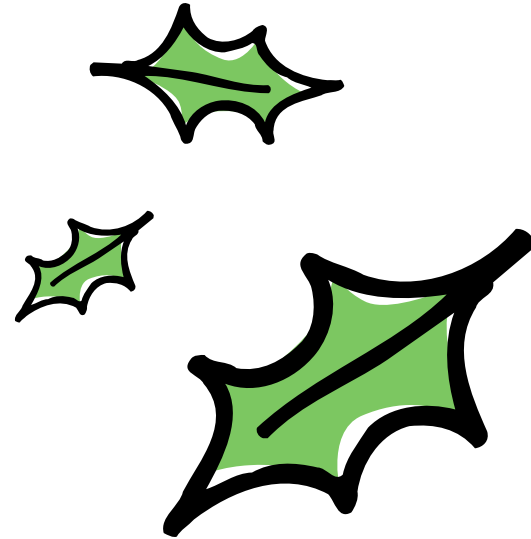
Food Service

- China, not paper, is used wherever possible.
- Earth Plus napkins which are 100% recycled and 100% bleach-free are used in the dining room.
- Paper products used are recycled.
- Paper vs. Styrofoam analysis completed. Styrofoam without CFCs is currently used.
- Food Service recycles cardboard, glass, bottles and cans.
- Leftovers are recycled wherever possible.
- Phosphate-free products are purchased wherever possible.



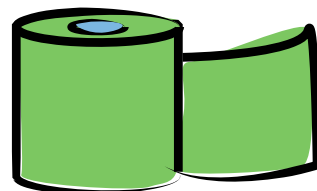
Durbin's

- Leaves are taken to the woods for natural composting.
- Sustainable elements such as no-mow seed and meadows in designated areas are designed to reduce mowing frequency.



Housekeeping

- Toilet paper and paper towels used throughout the facility are made from 100% recycled fiber, post consumer fiber exceeds 40%, and all are Green Seal Certified.
- Glass cleaner, all purpose floor cleaner and carpet cleaner are all Green Seal Certified.



Information Systems (IS)

- All computer equipment purchased by IS is Energy Star compliant.
- Where possible, IS installs computer-like appliances called "thin clients," which consume 1/10 the energy that a regular computer does.
- IS requests a small budget (~\$300 per year) to recycle equipment that may or may not work and is obsolete for SSIHM use using an outside vendor.
- Older cathode ray tube (CRT)-style monitors will be replaced with more energy-efficient flat panel displays when budget permits.
- Old computers that no longer function are stripped of any internal working parts (power supplies, network interface cards, video cards, memory modules, etc.) to repair other old computers that IHM Sisters may own.
- Old computer "shells" that have been stripped of working parts are often saved for recycling at the end of the fiscal year.
- Old monitors that function, but do not have associated computers for them any longer, are kept and "swapped out" as temporary replacements when newer monitors need to be repaired.
- Older, slower equipment that can still function in our organization is reassigned to less critical areas to maximize utility. For example, IS reassigns slower but functioning computers to areas like the Library to generate library cards and maintain the electronic card catalog.
- Keyboards, mice and power cords from non-functioning computers are cleaned and stored for re-use at a later date.
- 3-1/2-inch diskettes that contain obsolete software installation packages or data are re-formatted and re-used as needed.

